



**KING EDWARD VI
SHELDON HEATH
ACADEMY**

Year 8 Revision guides



Year 8 Maths

Cumulative Assessment Revision List

SET 1 PAPER 1	
A1	Estimating Answers
A1	Laws of indices
A1	Rearranging Simple Formulae
A2	Product of Primes
A2	Highest Common Factor (HCF)
A2	Similar Shapes
A3	Multiplying Decimals
A3	Expanding and Simplifying Brackets - Double Set of Brackets
A3	Solving Equations
A3	Solving Equations (harder)
A4	Adding and Subtracting Fractions
A4	Solving Quadratics
A7	Finding the nth Term
A7	Sharing using Ratio

SET 1 PAPER 2	
A1	Venn Diagrams - Introduction
A2	Increase/Decrease by a Percentage (Calc.)
A2	Exchanging Money
A2	Area of compound shapes
A4	Introduction to Vectors
A5	Simple Proportion
A5	Sectors of a Circle
A5	Harder Tree Diagrams
A6	Finding the Equation of a Straight Line - $y=mx+c$
A6	Pythagoras' Theorem
A6	Angles and Parallel Lines
A6	Averages from a Grouped Frequency Table
A7	Reverse Percentage Problems
A7	Drawing Quadratic Graphs

SET 2 PAPER 1	
A1	Estimating Answers
A1	Laws of indices
A2	Product of Primes
A2	Highest Common Factor (HCF)
A3	Multiplying Decimals
A3	Solving Equations
A3	Expanding and Simplifying Brackets - Double Set of Brackets
A4	Adding and Subtracting Fractions
A4	Factorising Quadratic Expressions in the Form $x^2 + bx + c$
A7	Finding the nth Term
A7	Sharing using Ratio

SET 2 PAPER 2	
A1	Venn Diagrams - Introduction
A2	Exchanging Money
A2	Increase/Decrease by a Percentage (Calc.)
A2	Area of compound shapes
A4	Introduction to Vectors
A5	Harder Tree Diagrams
A5	Simple Proportion
A5	Area of a Circle
A6	Pythagoras' Theorem
A6	Averages from a Grouped Frequency Table
A6	Angles and Parallel Lines
A7	Reverse Percentage Problems
A7	Drawing Quadratic Graphs

SET 3 PAPER 1	
A1	Product of Primes
A1	Reflections
A2	BODMAS/BIDMAS
A2	Multiplying Decimals
A2	Pictograms
A2	Finding the nth Term
A3	Four Rules of Negatives - Adding and Subtracting
A5	Expanding Brackets
A5	Dividing Fractions
A5	Adding and Subtracting Fractions
A5	Expanding and Simplifying Brackets - Double Set of Brackets
A7	Finding a Fraction of an Amount
A7	Solving Equations
A7	Stem and Leaf Diagrams

SET 3 PAPER 2	
A1	Straight Line Graphs
A3	Similar Shapes
A3	Compound Units
A3	Sharing using Ratio
A4	Area of a Circle
A4	The Gradient of a Line
A4	Averages and the Range from a List
A5	Scatter Diagrams
A6	Volume of a Prism
A6	Increase/Decrease by a Percentage (Calc.)
A6	Exchanging Money
A6	Surface Area of a Prism - Cuboids
A7	Simple Factorisation
A7	Frequency Trees

SET 4 PAPER 1	
A1	Multiplying integers
A1	Dividing integers
A2	Expanding brackets
A2	Simplifying fractions
A3	BIDMAS
A4	4 rules of negatives
A4	Function machines

SET 4 PAPER 2	
	Place value
	Area of a triangle
	Angles in a triangle
	Stem and leaf diagrams
	Substitution
	Co-ordinates
	Solving equations

Where to find revision resources?
Revision task on MathsWatch for each paper.

Year 8 English

YEAR 8 END OF YEAR EXAMS		
Reading	Information	45 minute long exam. Extract from an opening scene with Iago. In classroom assessment.
	Topic	Iago and power. Extract from the early part of the play. You will need to know what happens to him at the end. You will also need to know the context during Shakespeare's life.
	Where to revise	Materials on Teams. BBC Bitesize – KS3 English Othello, characters and Iago. YouTube for various video essays and video analysis.
Writing	Information	45 minute long exam. Choice of 2 tasks – a description based on a picture, or a story from the opening of a Gothic chapter. In classroom assessment.
	Topic	Gothic Creative Writing. Developing skills linked to writing for clarity, assessing on: 1. Language techniques (metaphors, similes, repetition) 2. Sentence variation 3. Punctuation 4. Paragraphing 5. Vocabulary choice
	Where to revise	At home, finding pictures by searching: KS3 Writing stimulus. Practice a story based on an image you find, and improve it by rereading.

Shakespeare: Othello

Read the following extract from Act 1 Scene 3 and answer the question that follows. At this point in the play, Iago is beginning to scheme against Othello.

IAGO

Thus do I ever make my fool my purse.

For I mine own gained knowledge should
profane

If I would time expend with such a **snipe**

But for my sport and profit. I hate the Moor,

And it is thought abroad that 'twixt my sheets

'Has done my office. I know not if 't be true,

But I, for mere **suspicion** in that kind,

Will do as if for surety. He holds me well.

The better shall my purpose work on him.

Cassio's a proper man. Let me see now:

To get his place and to plume up my will

In double **knavery**—How? how?—Let's see.

After some time, to **abuse** Othello's ear
That he is too familiar with his wife.

He hath a person and a smooth **dispose**

To be suspected, framed to make women false.

The Moor is of a free and open nature

That thinks men honest that but seem to be so,

And will as tenderly be led by th' nose

As asses are.

I have 't. It is **engendered**. Hell and night

Must bring this monstrous birth to the world's light.

How does Shakespeare present Iago as manipulative?

Decoded Vocabulary

Profane = To treat something important or special in a disrespectful way

Snipe = A silly or unimportant person (an insult)

Suspicion = A feeling that something might be wrong or untrue

Knavery = Tricking or cheating people (dishonest behaviour)

Abuse (his ear) = To fill someone's mind with lies or harmful ideas

Dispose = A person's natural way of behaving (their personality)

Engendered = Created or started (especially something bad)

Year 8 English

Y8 End of Year Exam: Creative Writing

For this task, you will have 2 options to choose from, a description, or a story (the opening of a chapter).

Write a description based on the following image.



Sentence Variation

Simple

Compound

Complex (including a subordinate clause, or an embedded clause)

Minor

Language Techniques

Metaphors

Similes

Repetition

Alliteration

Personification

Sensory Language: Sight, Sound, Smell, Taste, Touch

Paragraphing/ Organisation

TiP ToP S (Time, Person, Topic, Place, Speaker)

3 P M

Vocabulary

Eerie – strange and unsettling

Gloom – deep shadow or darkness

Sinister – suggesting evil or danger

Haunting – lingering in a disturbing way

Decaying – rotting or falling apart

Spectral – ghost-like or otherworldly

Melancholy – a deep, sad mood

Macabre – disturbing, linked to death

Ominous – suggesting something bad will happen

Desolate – empty, bleak, and abandoned

Year 8 Science

End of Year Test topics

Section A Paper

Topic: Atoms, Elements and The Periodic Table

*Key focus: The difference between elements, compounds and mixtures.
Common properties and uses of elements.*

[Elements, compounds and mixtures - BBC Bitesize](#)

[Developing the periodic table - BBC Bitesize](#)

Topic: Conservation of Mass and Combustion.

Key Focus: Reactants and products of combustion and testing for these products. Writing word equations for combustion.

[Combustion: what is it? - BBC Bitesize](#)

Topic: Pure and Impure Substances

Key Focus: Separating mixtures (filtration, distillation, chromatography)

[Pure and impure substances - KS3 Chemistry - BBC Bitesize](#)

[Chromatography guide for KS3 chemistry students - BBC Bitesize](#)

Topic: DNA/ Natural selection and conservation.

Key Focus: Adaptation

[Adaptations and evolution - Inheritance and genetics - KS3 Biology - BBC Bitesize - BBC Bitesize](#)

[Adaptations and evolution - Inheritance and genetics - KS3 Biology - BBC Bitesize](#)

Topic: Pollination and Photosynthesis.

Key Focus: Plant cells and photosynthesis (reactants and products)

[What are plant and animal cells? - BBC Bitesize](#)

[What is photosynthesis? - Respiration and gas exchange - KS3 Biology - BBC Bitesize](#)

[Reproduction in flowering plants - BBC Bitesize](#)

Section B Paper

Topic: Energy/ Heat transfer

Key Focus: Conduction and convection, Insulators, investigation skills (variables, fair testing, accuracy and safety)

[Conduction, convection and radiation - Heat transfer - BBC Bitesize](#)

[Planning an experiment - Practical skills for carrying out a scientific investigation - BBC Bitesize](#)

Topic: Exercise and respiration

Key Focus: Harmful effects of smoking. Nutrition. Reactants and products of respiration.

[Healthy diet - Nutrition, digestion and excretion - KS3 Biology - BBC Bitesize - BBC Bitesize](#)

[The effect of asthma, smoking and exercise on the gas exchange system - Respiration and gas exchange - Biology - BBC Bitesize - BBC Bitesize](#)

Topic: Contact Forces

Key focus: Pressure and moments. Forces investigation.

[Moments - Forces and movement - KS3 Physics - BBC Bitesize - BBC Bitesize](#)

[Hooke's law - Forces and elasticity - BBC Bitesize](#)

Topic: Digestion and Healthy eating

Key Focus: Components of a balanced diet, the effects of unhealthy eating

[Healthy diet - Nutrition, digestion and excretion - KS3 Biology - BBC Bitesize - BBC Bitesize](#)

Topic: Magnetism and electromagnets

Key focus: Magnetic material, electromagnets -how do they work and how to change the strength of them

[Electromagnetism and magnetism - KS3 Physics - BBC Bitesize](#)

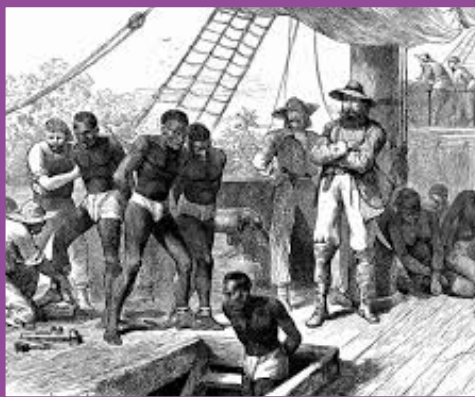
Year 8 History

Exam paper information: 1 paper - 50 minutes

Where to find revision resources?

Resources will be uploaded to Teams

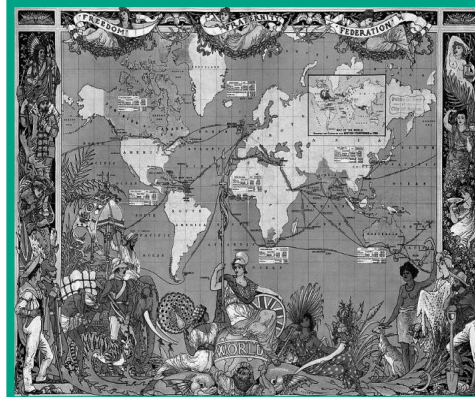
Key topics to revise



**The Transatlantic
Slave Trade**



**Industrial
Birmingham**



**The British Empire
(India and Ireland)**



**The causes of the
First World War**

Year 8 Geography

Exam paper information: 1 paper - 50 minutes

Where to find revision resources?

Resources will be uploaded to Teams



Our developing world	<ul style="list-style-type: none">✓ What are development indicators?✓ Why are some development indicators seen as more useful than others?✓ How can we ensure that we are fair when we judge a countries development?✓ Which countries in Asia represent HIC / NEE / LIC✓ What are some of the challenges of living in NEE cities?
Ecosystems	<ul style="list-style-type: none">✓ What is an ecosystem?✓ How do food chains and food webs show us interdependence in ecosystems?✓ What are the adaptations of plants and animals in the desert?✓ How do humans use extreme environments?✓ How are ocean environments impacted by humans?
Globalisation and Global Trade	<ul style="list-style-type: none">✓ What is globalisation? What has caused it?✓ How has globalisation impacted us?✓ How has globalisation impacted the rest of the world?✓ How do different countries contribute to the production of products?✓ How are different countries impacted by global trade and production?

Year 8 Spanish Revision

Click below for sentence builders



Year 8 Computer Science

Exam paper information: Part (A) – Written exam paper 45 minutes • Part (B) – ICT skills practical task

Key Topics to Revise

Part (A)

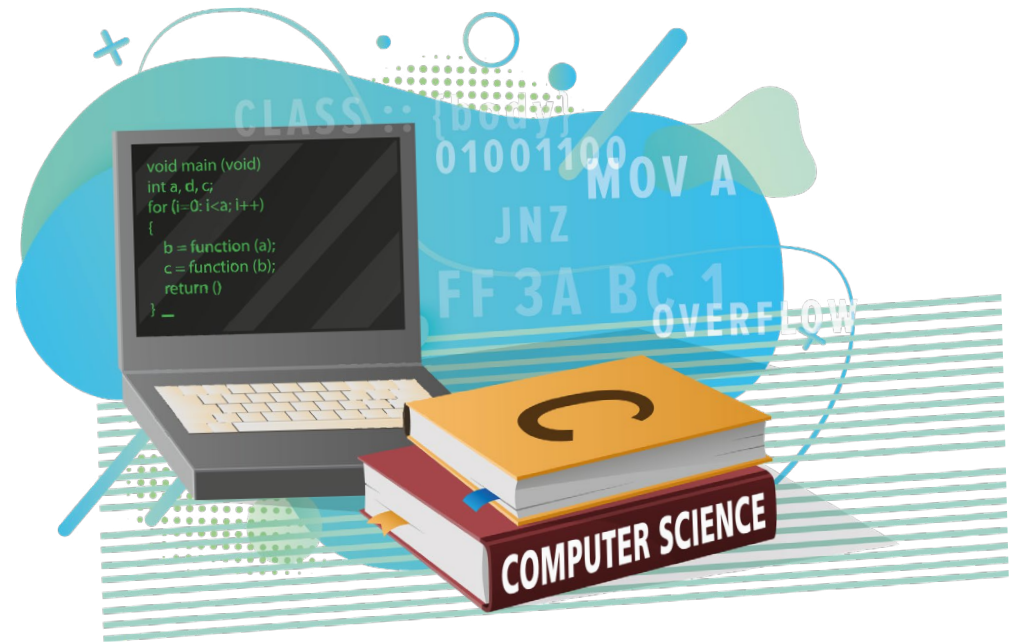
- Cybersecurity
 - Introduction to Python
 - Representation in binary
 - Web design and html
-

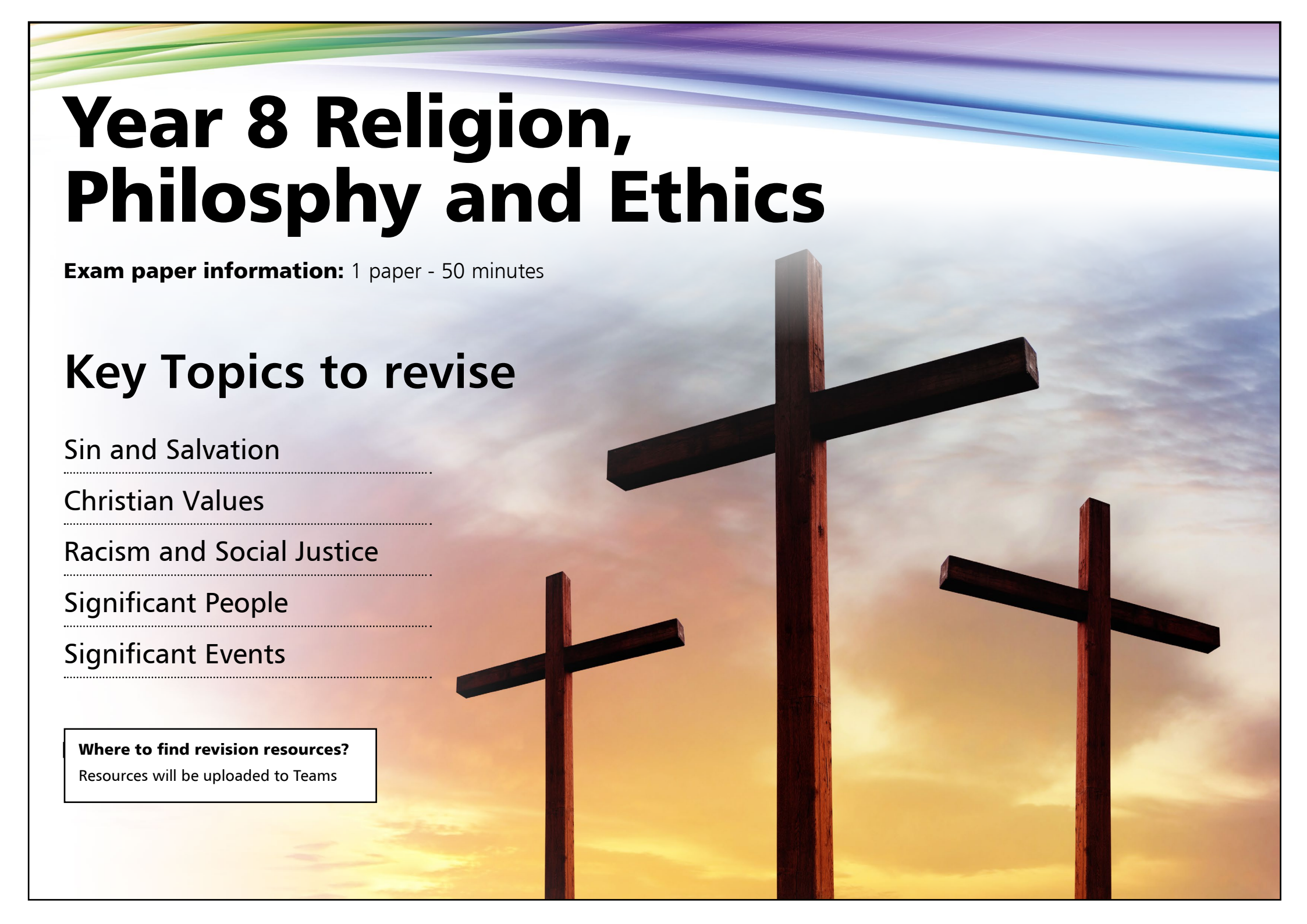
Part (B)

You will be asked to create a sample webpage in html

Find links below for revision information:

Sequence, selection and Iteration:





Year 8 Religion, Philosophy and Ethics

Exam paper information: 1 paper - 50 minutes

Key Topics to revise

Sin and Salvation

Christian Values

Racism and Social Justice

Significant People

Significant Events

Where to find revision resources?

Resources will be uploaded to Teams